

Quick Installation Guide

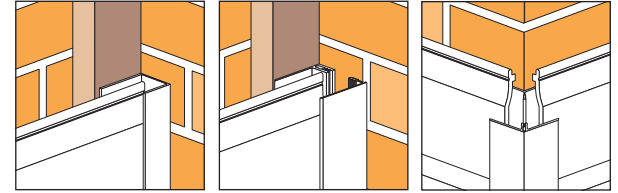
Cladding Installation Sequence of Work

- A. Frame Battens.
- B. Battens around openings.
- C. Intermediate vertical battens.
- D. Starter trims (or bottom angle ventilation strip, as appropriate, see illustrations).
- E. Vertical perimeter trims, corner trims (where two-part trims are used, fix only the inner part).
- F. Top perimeter trims (these engage inside the vertical trims).
- G. Pickings to battens as required for any cut planks.
- H. Plank profiles and joint covers or centre joint trims as appropriate.
- I. Outer components of two-part trims.

Recommended min. batten depth to create ventilation path behind cladding panels: White cladding = 25mm; Foiled or coloured cladding – 50mm.

Use a 60mm x 15mm angle ventilator to minimise insect ingress and maintain a continuous air gap behind the cladding.

E Trim Options

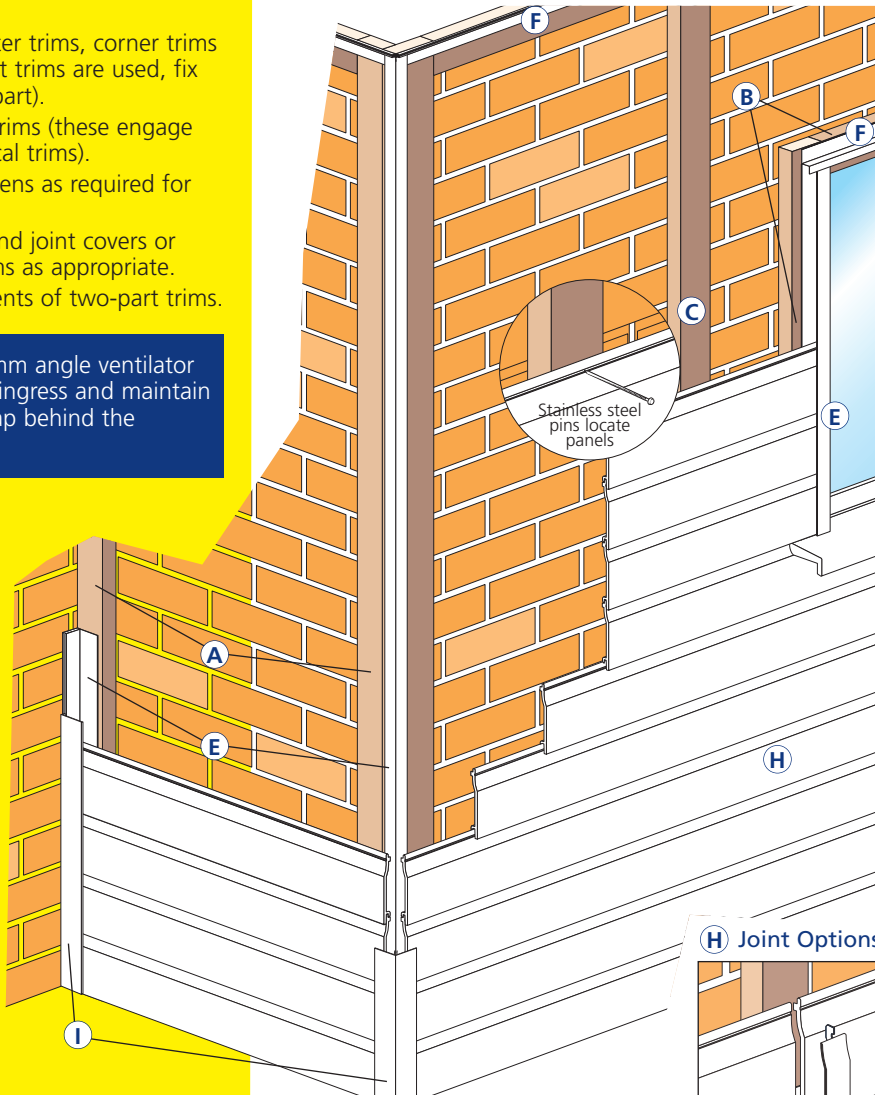


Do's

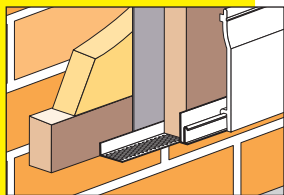
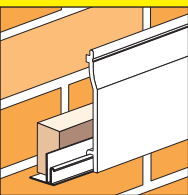
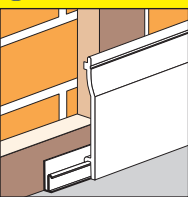
- Fix white boards every 600mm max.
- Fix foiled boards every 400mm max.
- Leave a continuous ventilation gap to allow heat to escape from behind cladding boards. The gap is created by the battens on which the board is mounted.
- For white cladding - the ventilation gap behind the boards must be 25mm min.
- For foiled cladding - the ventilation gap must be 50mm min.
- Where the board terminates at a corner or at the edge of a cladding area ensure the board end is fixed. This is really important with cladding because of the larger exposed surface area involved.

Don'ts

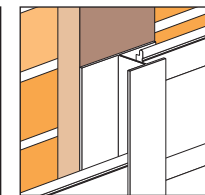
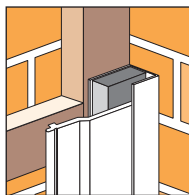
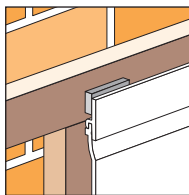
- Don't use too much silicone - too much silicone used to externally seal or secure joints and corners looks great on the day of installation but over time will become soiled and bad workmanship will be exposed.
- Don't pin joints - this is poor practice because the expansion gap will be compromised and will not function correctly. Two things happen as a result; firstly the trim can be split by the movement of the board ends that it covers, and secondly pins highlight the location of a joint that is designed to blend onto the boards.
- Don't hesitate to call us if you need any advice or help.



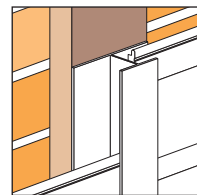
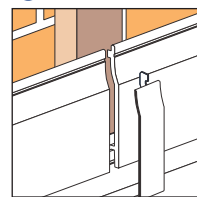
D Starter Trims



G Packing for Cut Planks



H Joint Options



SBP Limited,
Pioneer House, Mariner, Lichfield Road Industrial Estate,
Tamworth, Staffordshire, B79 7TF

Tel: 01827 317200 Fax: 01827 317201

www.summitpvc.co.uk